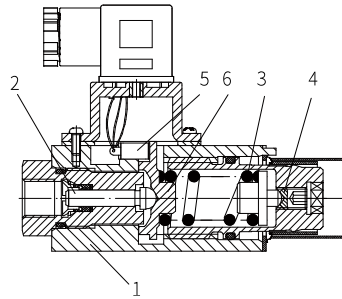
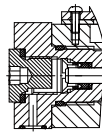


Function description, sectional drawing

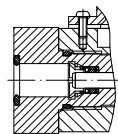
The HED4 type hydraulic-electric pressure switch is a piston pressure switch. It consists of the valve body (1), cartridge with piston (2), spring (3), adjusting element (4) and micro switch (5). The detected pressure acts on the piston (2), then the piston (2) is supported by the spring seat (6) and acts against the continuously adjustable force of the spring (3). The spring seat (6) transfers the movement of the piston (2) to the micro switch (5) to make the circuit switched on or off according to the design requirements.



Model HED40A-1XJ/



Model HED40P-1XJ/



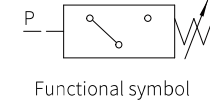
Model HED40H-1XJ/

07

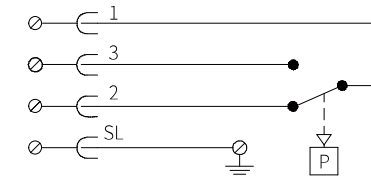
Models and specifications

| | | | | | | |
|--|------|-----|---|-----|---|--|
| HED4 | | -1X | J | Z14 | * | more information in text |
| piston type pressure switch | | | | | | |
| subplate mounting | =OP | | | | | sealing material |
| piping installation | =OA | | | | | No code= NBR seals |
| vertical stacking systems | =OH | | | | | V= FKM seals (consult for other seals) |
| 10 to 19 series (10 to 19 series installation and connection size unchanged) | =1X | | | | | S= protective cap |
| Rekith | =J | | | | | L24= 24V lamp (25~35V) |
| maximum adjusting pressure 50bar | =50 | | | | | L110= 110V lamp (90~130V) |
| maximum adjusting pressure 100bar | =100 | | | | | L220= 220V lamp (180~240V) |
| maximum adjusting pressure 350bar | =350 | | | | | Z14= small plug |

Functional symbols and terminal connection



Functional symbol



terminal connection -Z14 small plug

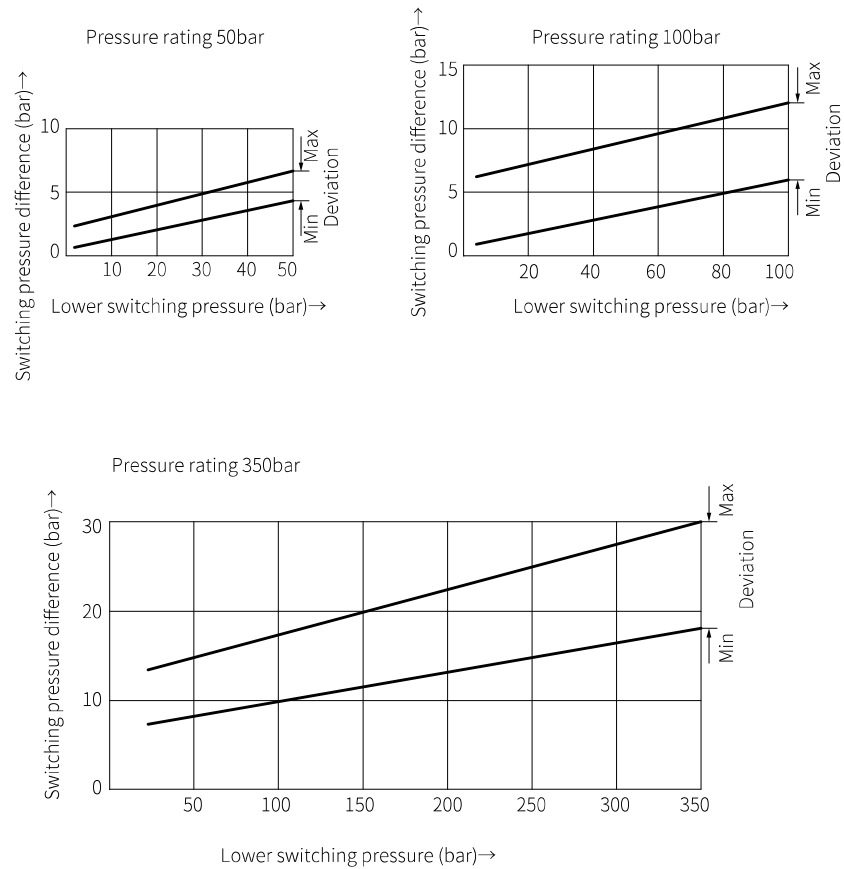
Technical parameters

| | | | | | | | |
|--|--------------------------------|---|-----|-----------------------|-----|----|-----|
| Working medium | | Mineral oil - suitable for NBR and FKM seal | | | | | |
| | | Phosphate ester - suitable for FKM seal | | | | | |
| Working medium temperature range | °C | 20 to +80 (FKM seal) | | | | | |
| | °C | 30 to +80 (NBR seal) | | | | | |
| Viscosity range | mm ² /s | 2.8 to 500 | | | | | |
| Cleanliness of oil: | | The maximum allowable pollution level of oil is NAS16389 and ISO4406 Class 20/18/15 | | | | | |
| Switching accuracy (repeatability) | % | <± 1% of setting range | | | | | |
| Allowed switching frequency | times/minute | 120 | | | | | |
| Electrical connection | | Plug-in connector to DIN 43 650 form A, 3... Pin +PE | | | | | |
| Rated pressure (bar) | Maximum setting pressure (bar) | Recover pressure (bar) | | Action pressure (bar) | | | |
| | | min | max | min | max | | |
| | | 50 | 50 | 2 | 46 | 4 | 50 |
| | | 100 | 100 | 3 | 89 | 8 | 100 |
| | | 350 | 350 | 6 | 322 | 20 | 350 |
| Maximum connection cross-sectional area | mm ² /s | 1.5 | | | | | |
| Valve protection to DIN43650 | | IP 65 | | | | | |
| If DC inductive loading, it need to use a spark suppressor to extend the life. | | | | | | | |
| Contact load | AC | 250V/5A; | | | | | |
| | DC | 50V/1A, 250V/0.2A | | | | | |
| Weight | Pressure switch | 0.6 | | | | | |
| | Stacking plate | 0.8 (size 6) 1.9 (size 10) | | | | | |

07

Characteristic curve

(Measured when using HLP46, $\vartheta_{oil}=40^{\circ}\text{C} \pm 5^{\circ}\text{C}$)

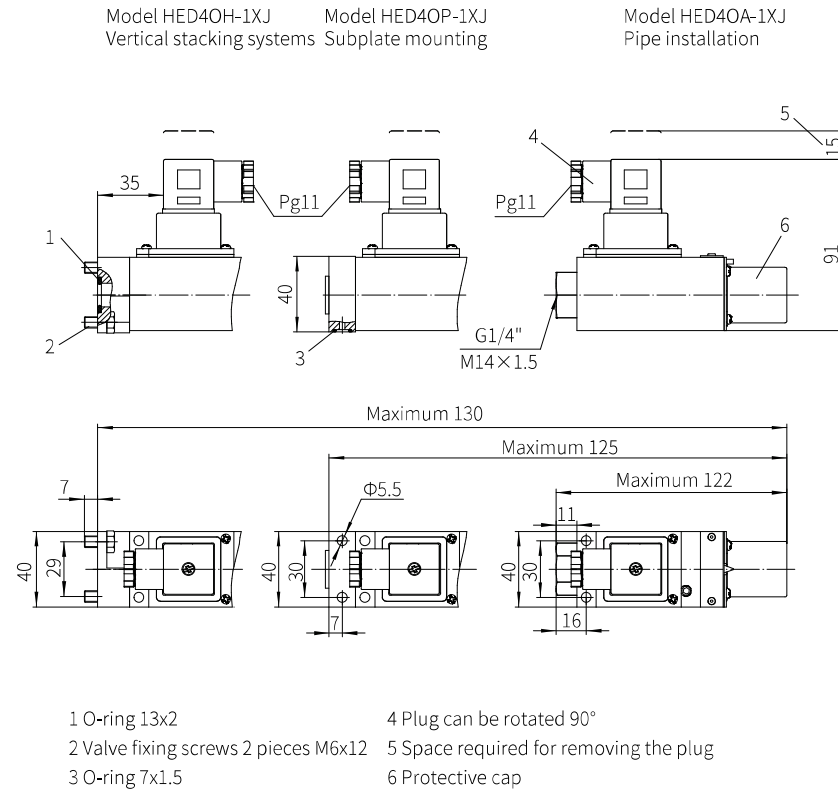


07

Component size

Size unit: mm

Pressure switch



07